



P/N: 48BMOP48IP65 (shown loaded)



The swivel splice tray is also removable

Applications

The IP65 fiber wall box is suitable for outdoor connections such as video security networks. The box will protect the connections for MAN or campus links from dust or water ingress. It is delivered unloaded and ready to receive duplex LC or simplex SC. It interconnects tight buffered, loose tube, pre-terminated or steel tape armoured cable.

General Characteristics

- Wall box for 24 duplex LC or simplex SC adapters.
- Up to 48 heat shrinks if connected to the duplex LC, multimode or singlemode adapters
- Up to 48 direct connections on tight buffered fibers, when splice tray is not used
- Removable door for quicker and easier access during the installation
- Including quick release cable management rings for bending radius protection
- Suitable for both indoor or outdoor applications
- 2 Cable glands PG16 for cable input and 3 sealed cable gland 20mm for 3 x 8 fibers output
- 2 x 20mm cable input or output

Physical properties

- ABS compound, light grey RAL 7035
- IP 65
- Operating temperature : -40°C to + 60°C
- 2 x PG16 cable glands
- 2 x 20mm cable input or output
- Supplied with 24 heat shrinks, snake tube, cable ties and wall mount accessories
- The removable splice tray has to sides, up with the adapters holder, down the splice holder.
- Locking system including a key (301 type)
- Dimensions :
 - Width 270 mm x depth 110 mm x height 340 mm
 - Width when the door is open : 372 mm
- Weight : 1,8 kg

Related products

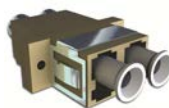
Part numbers	Description	Packing
48 MMT SCS	Multimode simplex SC UPC beige adapter	Unit
48 SMT SCS	Singlemode simplex SC UPC blue adapter	Unit
48 MMT LCD	Multimode duplex LC UPC beige adapter	Unit
48 SMT LCD	Singlemode duplex LC UPC blue adapter	Unit



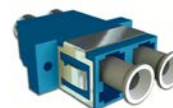
48MMTSCS



48SMTSCS



48MMTLCD



48SMTLCD

Standards

Tested to comply with the requirements of :

- TIA/EIA 568 C.3,
- ISO/IEC 11801 Amd 1.0 / Amd 2.0,
- EN 50173, EN 297-1
- IEC 60304, IEC 61754
- ROHS, REACH, SvHC

Ordering Information

Part numbers	Description	Packaging
48 BM OP 48 IP65 P	Fiber plastic IP65 wall box up to 48 fibers (unloaded)	Unit