



ACCESSORIES

19" RACK PANELS

BLANK RACK PANELS



PAN119

Part nb	Height	Packaging
PAN119	1 U	1 unit
PAN219	2 U	1 unit
PAN319	3 U	1 unit
PAN419	4 U	1 unit

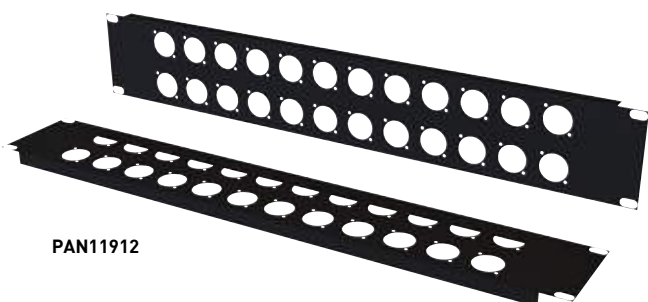
RACK PANELS WITH VENTILATION



PAN2192V

Part nb	Height	Packaging
PAN1191V	1 U	1 unit
PAN2192V	2 U	1 unit
PAN3193V	3 U	1 unit
PAN4194V	4 U	1 unit

RACK PANELS WITH D-SERIES MOUNTING HOLES



PAN11912

Part nb	Number of holes	Height	Packaging
PAN1198	8	1 U	1 unit
PAN11912	12	1 U	1 unit
PAN11916	16	1 U	1 unit
PAN21932	32	2 U	1 unit

PANELS WITH BNC MOUNTING HOLES



PAN11916T

Part nb	Number of holes	Height	Packaging
PAN11916T	16	1 U	1 unit
PAN21932T	32	2 U	1 unit

REAR TIE BAR



PANPCA

Part nb	Height	Packaging
PANPCA	Rear tie bar – 95mm	1 unit

STAGE BOXES



SB12



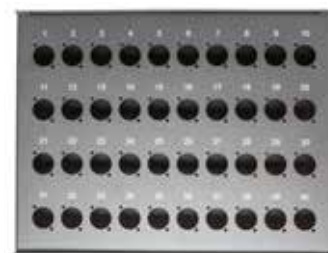
SB16



SB24



SB32



SB40

Part nb	Number of holes		Packaging
	D Serie	Stage box side exit format	
SB 8	8	1 cable gland	1 unit
SB 12	12	1 multi-pins rectangular socket	1 unit
SB 16	16	1 multi-pins rectangular socket	1 unit
SB 24	24	1 multi-pins rectangular socket	1 unit
SB 32	32	1 multi-pins rectangular socket	1 unit
SB 40	40	1 multi-pins rectangular socket	1 unit

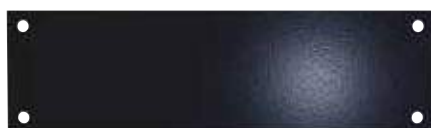
REAR PANEL FOR 19" PANELS



SB192

Part nb	Height	Packaging
SB 192	2	1 unit
SB 193	3	1 unit
SB 194	4	1 unit
SB 195	5	1 unit

BLANKING PLATE



SBOBT

Part nb	Designation	Packaging
SBOBT	Blanking plate for multi-pins rectangular socket	1 unit

ADAPTING PLATES



SBOBT28

Part nb	Designation	Packaging
SBOBT22	Adapting plate for cable gland – Ø 22 mm	1 unit
SBOBT28	Adapting plate for cable gland – Ø 28 mm	1 unit
SBOBT37	Adapting plate for cable gland – Ø 37 mm	1 unit

TECHNIC RANGE CABINETS



Product advantages

- Aluminium welded triangular angle and reinforced bar for a loading capacity up to 800 kg
- 12 U additionally available in vertical way
- 180° opening doors to a better accessibility on the cabinet
- Large aperture up to 550 mm on the roof equipped with a panel brush
- Vertical cable management for patch cords
- Removable side panels
- Color: anthracite grey – RAL 7016

Characteristics

- Skeleton: reinforced 2 mm steel structure - Aluminium diecast tryedre
- Mounting: front & rear 19" mounting equipped with 3 vertical U
- Front door: secured & tempered glasses double door (800 mm)
secured & tempered glassed single door (600 mm)
- Back door: full metal double door
- Roof: double roof extra slim equipped with large aperture.
- Cable management: vertical cable management

Mechanical characteristics

- Protection index (IP): IP20
- Mechanical index (IK): IK09 compliant to EN62262
- Operating temperature: -5°C to + 50°C

Part nb	Height	Width –mm	Depth–mm	Packaging
T2766	27 U	600	600	1 unit
T3366	33 U	600	600	1 unit
T3388	33 U	800	800	1 unit
T4266	42 U	600	600	1 unit
T4268	42 U	600	800	1 unit
T4286	42 U	800	600	1 unit
T4288	42 U	800	800	1 unit
T42810	42 U	800	1000	1 unit
T4788	47 U	800	800	1 unit

RACK SYSTEMS

19" FIXED PLATES



BPF1UXXAD

Part nb	Height	Depth	Packaging
BPF1U450	1 U	450 mm	1 unit
BPF2U550	2 U	550 mm	1 unit

19" SLIDING PLATE



BPG1U550

Part nb	Height	Depth	Packaging
BPG1U550	1 U	550 mm	1 unit

FANS AND THERMOSTAT



ACB4V

Part nb	Designation	Packaging
ACB2V	Bloc 2 fan unit for 19" cabinet range	1 unit
ACB4V	Bloc 4 fan unit for 19" cabinet range	1 unit

ACTHERMOST



Part nb	Designation	Packaging
ACTHERMOST	Thermostat for ventilators	1 unit

ACCESSOIRES



ACCASTOR

Part nb	Designation	Packaging
ACCASTOR	4 castors kit including 2 castors with brake	1 unit
BMASSE19	19" grounding kit - Equipped with 6 green/yellow wires 6 mm ²	1 unit

COFFRETS

19" WALL MOUNTED CABINETS ECOFF



ECOFF

Product advantages

- Available in 450 & 600 mm depth
- Black color (RAL 9004)
- In option : set of 4 wheels
- Can be placed under a desk
- Front and rear 19" mounting

Part nb	Nbr of U	Depth	Packaging
ECOFF6UP450T	6 U	450 mm	1 unit
ECOFF9UP450T	9 U	450 mm	1 unit
ECOFF12UP450T	12 U	450 mm	1 unit
ECOFF15UP450T	15 U	450 mm	1 unit
ECOFF9UP600	9 U	600 mm	1 unit
ECOFF12UP600	12 U	600 mm	1 unit
ECOFF15UP600	15 U	600 mm	1 unit

ACCESSORIES

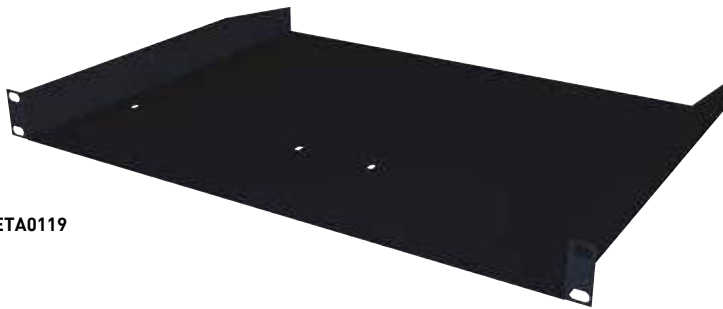


ECOFFWHEEL

Part nb	Designation	Packaging
ECOFFWHEEL	Set of 4 wheels	1 unit
ECOFFAN1V	Bloc of 1 fan	1 unit
ECOFFAN2V	Bloc of 2 fans	1 unit

19" ACCESSORIES

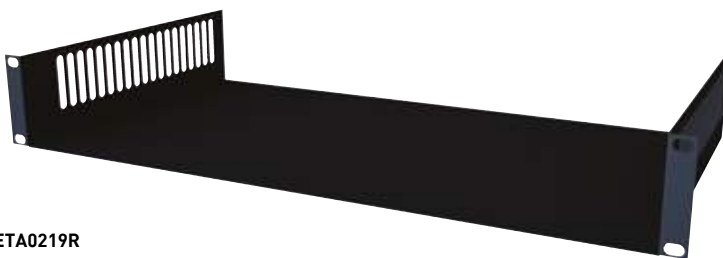
BLACK STEEL SHELVES



ETA0119

Part nb	Height	Dimensions			Packaging
		Width - mm	Height - mm	Depth - mm	
ETA 0119	1 U	443	44	300	1 unit
ETA 0219	2 U	443	88	300	1 unit
ETA 0319	3 U	443	132	300	1 unit

19" RACK INSERTS



ETA0219R

Part nb	Height	Dimensions			Packaging
		Width - mm	Height - mm	Depth - mm	
ETA 0219 R	2 U	440	88	250	1 unit

DRAWERS WITH LOCK



TIR219F

Part nb	Height	Packaging
TIR 219 F	2 U	1 unit
TIR 319 F	3 U	1 unit
TIR 419 F	4 U	1 unit

CABLE REELS SCHILL



PROFESSIONAL LINE: HT SERIES



Designation

Black metal cable drums with blank cover

Part nb	Outer Ø (mm)	Ø Core (mm)	Drum width (mm)	Weight (kg)
HT380	380	178	142	5.28
HT480	460	178	142	7.31
HT481	460	240	170	7.87
HT482	460	320	170	8.27
HT582	580	320	170	12.53

PROFESSIONAL LINE: GT SERIE



Designation

Black rubber cable drums with blank cover

Part nb	Outer Ø (mm)	Ø Core (mm)	Drum width (mm)	Weight (kg)
GT310	310	170	112	1.76
GT380	380	236	166	4.15
GT450	445	295	177	5.58

PROFESSIONAL LINE: GTxxRM SERIE



Designation

Black rubber cable drums with auxiliary spool

Part nb	Outer Ø (mm)	Ø Core (mm)	Drum width (mm)	Weight (kg)
GT235RM	235	135	110	1.02
GT310RM	310	170	132	1.76
GT380RM	380	236	182	4.25
GT450RMFK	445	296	187	5.60

CABLE REELS SCHILL



STAGE LINE: SK47 SERIE



Designation

Black metal stage cable drums

Part nb	Outer Ø (mm)	Ø Core (mm)	Drum width (mm)	Weight (kg)
SK4700	460	280	250	17.90
SK4701	460	280	450	19.20

OPTIONS



KOMBSO



KOMBRM



GT24D



GTADP3

Designation

Part Nb

Blanking covers GT cable reel serie	KOMBxxSO
Cable coiling support for GT cable reel serie	KOMBxxRM
Front panel with 1 D serie hole for GT cable reel serie	GT1D
Front panel with 8 D serie hole for GT cable reel serie	GT8D
Front panel with 24 D serie hole for GT cable reel serie	GT24D
Front panel adapter for GT380 cable reel	GTADP3
Front panel adapter for GT450 cable reel	GTADP4

CABLE DRUM CAPACITY

Part nb	Ø 7.00 mm cable	Ø 10.00 mm cable	Ø 12.00 mm cable	Ø 15.00 mm cable	Ø 20.00 mm cable	Ø 30.00 mm cable
GT235	57 m	30 m	19 m	11 m	-	-
GT310	128 m	64 m	39 m	22 m	12 m	-
GT380	237 m	114 m	82 m	43 m	24 m	-
GT450	286 m	138 m	99 m	52 m	29 m	10 m
HT380	231 m	115 m	72 m	44 m	28 m	13 m
HT480	380 m	186 m	114 m	60 m	46 m	15 m
HT481	372 m	193 m	130 m	79 m	41 m	15 m
HT482	278 m	137 m	81 m	50 m	27 m	11 m
HT582	578 m	296 m	187 m	117 m	64 m	26 m
SK4700	462 m	247 m	154 m	105 m	52 m	26 m
SK4701	846 m	446 m	285 m	198 m	96 m	49 m